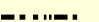




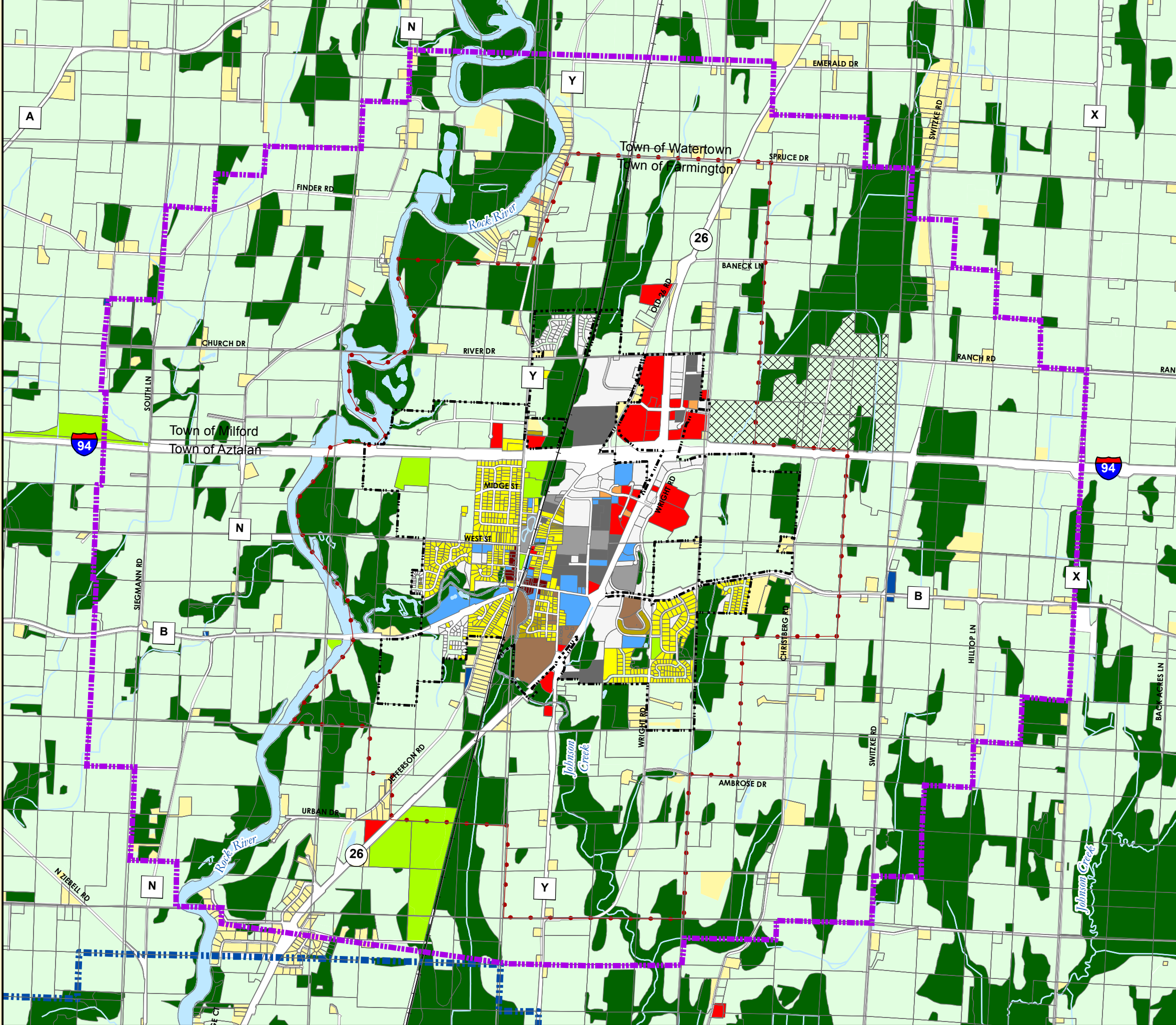


Existing Land Use

-  Village Limits
-  Urban Service Area Boundary
-  Village of Johnson Creek Extraterritorial Jurisdiction
-  City of Jefferson Extraterritorial Jurisdiction
-  Parcels

Existing Land Use Categories

-  Rural Holding
-  Vacant
-  Single Family Residential - Septic
-  Single Family Residential - Sewered
-  Two-Family/Townhouse Residential
-  Mixed Residential
-  Downtown
-  Planned Commercial
-  Planned Office
-  Extraction & Disposal
-  General Industrial
-  Planned Industrial
-  Community Facilities
-  Public Parks & Open Space
-  Environmental Corridor
-  Right of Way
-  Surface Water



February 28, 2008



Sources: Jefferson County, Dane County, Dodge County, US Census